

# HEALTHCARE ASSOCIATED INFECTIONS

Mark E. Rupp, M.D.  
Professor, Infectious Diseases



Nebraska Infection  
Control Network

1

## Common Healthcare-Associated Infections (HAIs) & Infection Control

- Significance of Healthcare-Associated Infections
- Specific HAIs:
  - Significance, Pathogenesis, Etiology, Prevention
  - Urinary Tract Infection (CAUTI)
  - Surgical Site Infection (SSI)
  - Pneumonia (VAE/VAP)
  - IV Catheter-Associated Infection (CLABSI)
- Horizontal Interventions to prevent HAIs

2

## Infection Control Year 1500



Nosocomial Infection Rate ~ 90%

3



## Significance of Nosocomial Infections

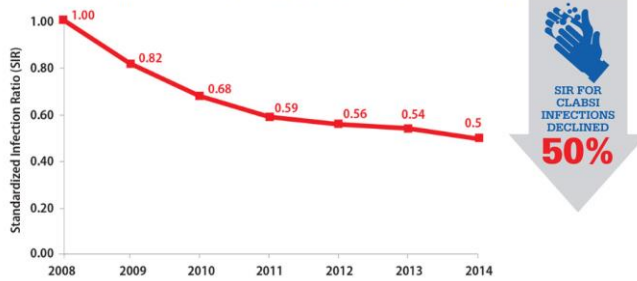
- 4% of all hospitalized patients in the US develop a nosocomial infection (722,000 HAIs)
- Approximately 75,000 deaths/yr
- AIDS: 5,680 deaths (2023), Motor vehicle accidents: 40,901 deaths (2023), Breast cancer: 42,250 deaths (2024), Gun violence: 46,728 (2023); Drug Overdose: ~73,000 (2025)
- 28-33 billion dollars/yr
- Many (most) of these infections are preventable!

<https://www.cdc.gov/winnablebattles/report/HAIs.html>

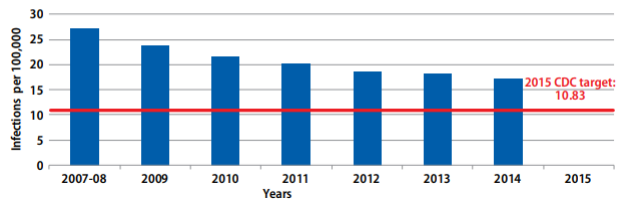
4

# HAI Prevention – a partial success story!

SIR for central line-associated bloodstream infections declined sharply



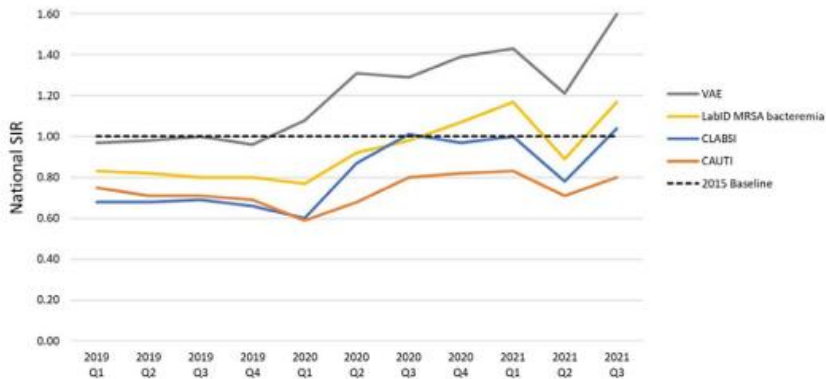
Trends in healthcare-associated invasive methicillin-resistant *Staphylococcus aureus* (MRSA) infections, 2007–2014<sup>1</sup>



<https://www.cdc.gov/winnablebattles/report/docs/wb-hai.pdf>

5

# COVID-19: Reversal of Trends



From CDC NHSN: 13% decrease in CLABSI between 2022 and 2023; not below prepandemic 2019 SIR. (CDC HAI report 11/25/2024)

Lastinger, et al. ICHE 2023

6

## HAI Progress Report (2024)

(Released Jan 29, 2026)

- Compared to 2023:
  - 9% decrease in CLABSI
  - 10% decreased in CAUTI
  - 2% decrease in VAE
  - 7% decrease in MRSA BSI
  - 11% decrease in CDI



7

## Nosocomial UTI

- ~15-20% of adult hospital patients have an indwelling urinary catheter; each day of catheterization is associated with a 3%-7% risk of bacteriuria
- 62,700 CAUTI cases/yr in US
- Mortality: 9,000 deaths/yr due to UTI
- LOS: 1-4 days
- Cost \$1000/case; 350-450 million

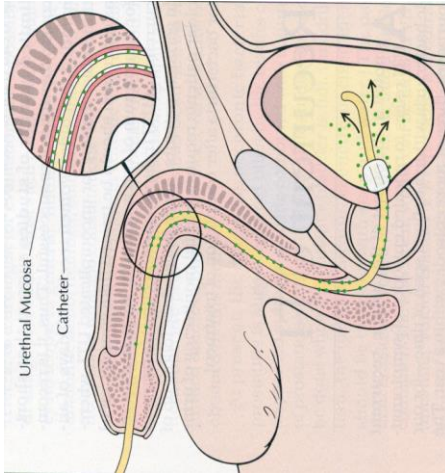
<https://www.ahrq.gov/hai/cauti-tools/guides/implguide-pt1.html>

<https://www.hospitalsafetygrade.org/media/file/CAUTI.pdf>

<https://www.cdc.gov/nhsn/pdfs/psscmanual/7psccauticurrent.pdf>

8

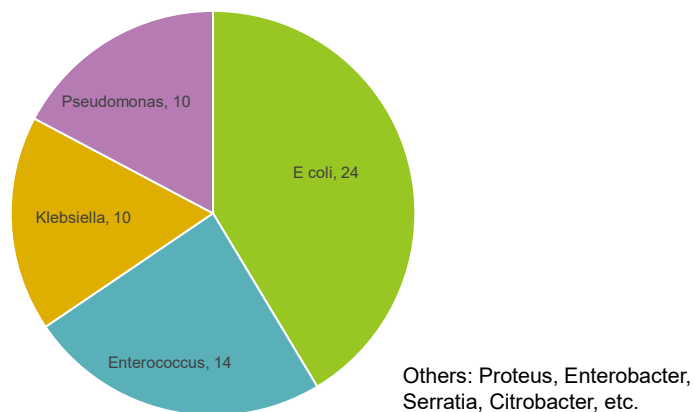
## CAUTI - Pathogenesis



- Major risk factor for Nosocomial UTI is presence of urinary catheter
- Pathogenesis involves interactions between device, microbe, and host
- Catheter balloon prevents complete bladder emptying resulting in residual urine/culture media

9

## Microbial Etiology of CAUTI



Antimicrobial-Resistant Pathogens Associated With Healthcare-Associated Infections: Summary of Data Reported to the National Healthcare Safety Network at the Centers for Disease Control and Prevention, 2011-2014. AU Weiner et al. Infect Control Hosp Epidemiol. 2016;37(11):1288.

10

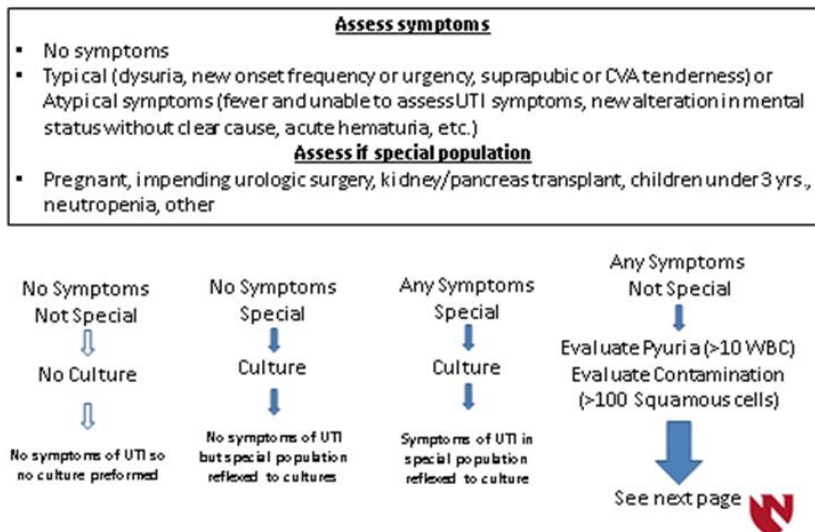
## Prevention of CAUTI

- Prevention of UTI
  - Only use a catheter when truly needed. Appropriate Indications: Obstructive uropathy, Intensive monitoring of I & O, Periop, Sacral wound, Comfort care
  - Insert with aseptic technique, maintain closed system, maintain unobstructed urinary flow
  - Antiseptic coated catheters
    - Cost effective means to prevent UTI?
- Prevention of inappropriate urine cultures
  - Don't culture the urine of patients with asymptomatic bacteriuria
  - No pyuria = no culture for routine patients

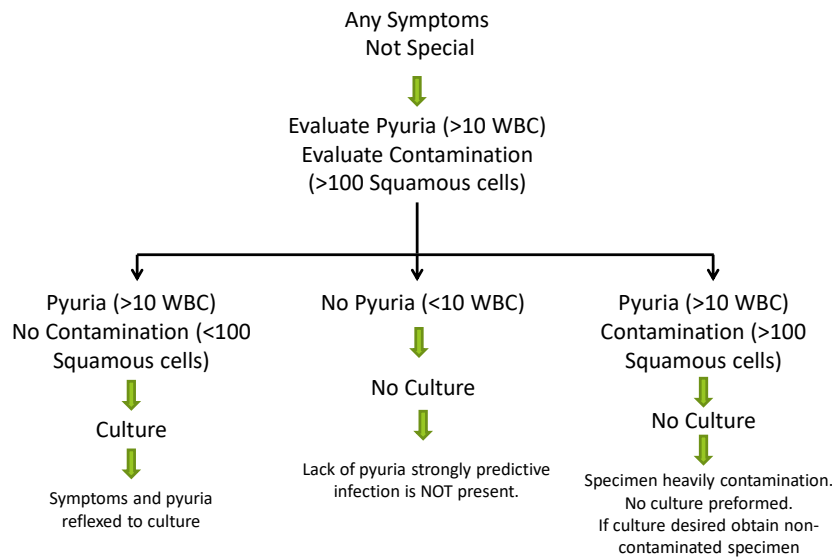
<https://www.cdc.gov/infectioncontrol/guidelines/cauti/index.html>

11

## UTI Evaluation Order Panel



12



13

## Surgical Site Infections

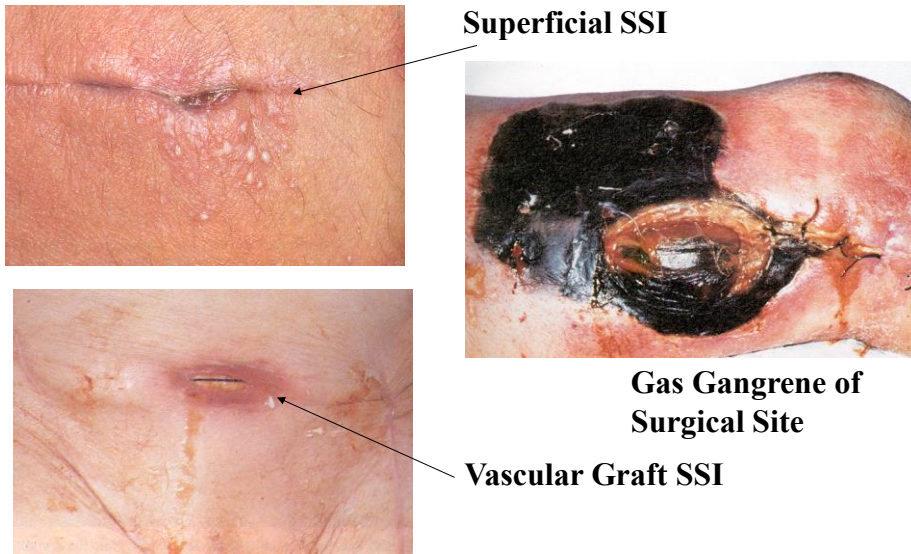


- Scope of problem:
  - SSI occur in <1% - 5% of procedures
  - SSI account for approx 15% of nosocomial infections
  - LOS: approx 7 d
  - Cost: approx \$15,000/case

Centers for Disease Control and Prevention Guideline for the Prevention of Surgical Site Infection, 2017. Sandra I. Berríos-Torres, et al. JAMA Surg. 2017;152(8):784-791. doi:10.1001/jamasurg.2017.0904

14

## Surgical Site Infections



15

## SSI Preventive Measures (CDC HICPAC)

- Prophylactic Antibiotics
  - Right drug/right procedure
  - Timed to have bactericidal level in tissues at time of incision, (no more than 1 hour prior to surgery)
  - **Stop when skin is closed**
  - No rec for redosing, no rec for weight-based dosing
- Do not apply antimicrobials topically
- Consider triclosan sutures
- Consider intra-op irrigation of deep or SQ tissues with aqueous iodophor

16

## SSI Preventive Measures (CDC HICPAC)

- Skin Preparation
  - Advise pts to shower at least night before operative day, no recs on timing, number, or CHG
  - Perform intraop skin prep with alcohol-based antiseptic
  - Use clippers not razors
- No rec re: antimicrobial dressings
- No need for microbial wound sealants
- No need for plastic adhesive drapes
- Glucose Control
  - Keep glucose no greater than 200

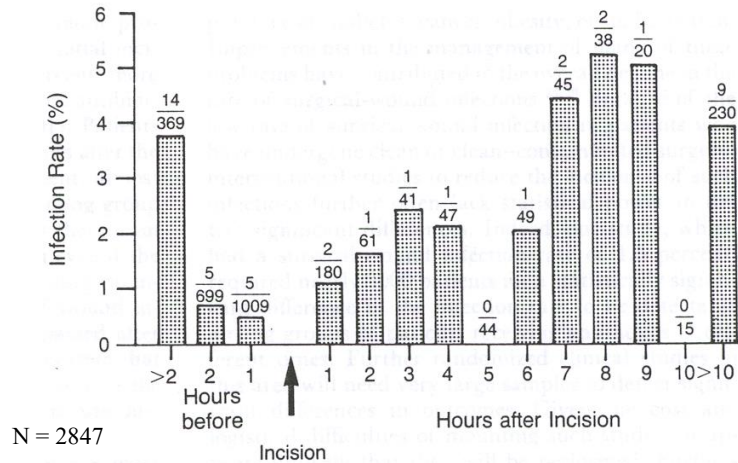
17

## SSI Preventive Measures (CDC HICPAC)

- Hypothermia
  - Maintain normothermia – no recs on lower limit of normothermia or how to achieve normothermia
- Oxygenation
  - For pts with normal pulm fxn and undergoing ETT, administer increased FiO<sub>2</sub> during surgery and immediate postop. Maintain normothermia and volume. No rec on optimal target, duration, delivery method.
  - Recent skepticism re: FiO<sub>2</sub>

18

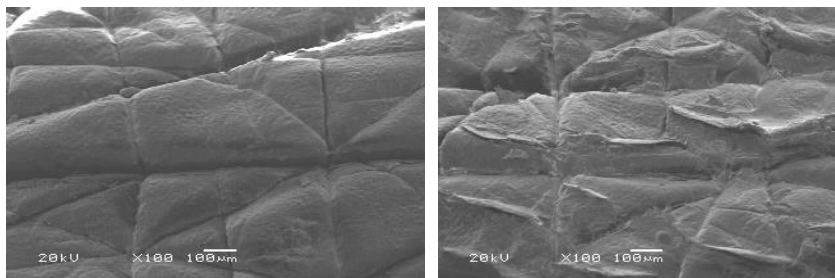
## Importance of Timing of Prophylactic Antibiotics



(Classen, NEJM 1992)

19

## Hair Removal vs Surgical Site Infection



“Do not remove hair preoperatively unless hair at or around the incision site will interfere with the operation.”

“If hair is removed, remove immediately before the operation, preferably with electric clippers.”

20

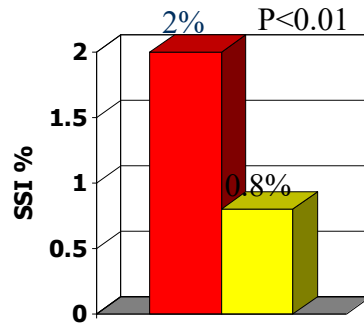
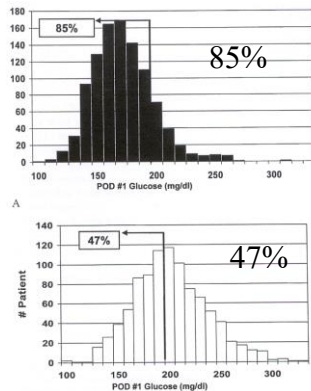
## Control of Blood Glucose in Surgical Patients

### Furnay, et al Ann Thoracic Surg, 1999

2467 consecutive diabetic pts undergoing open heart surgery

968 controls (Sliding Scale Insulin)

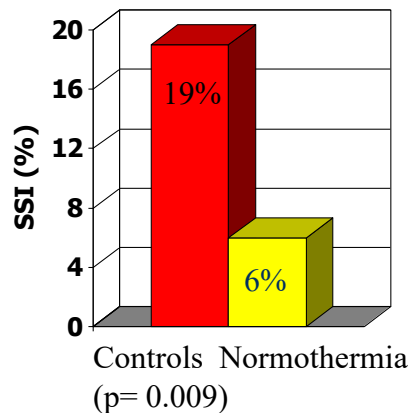
1499 IV insulin (goal; glu < 200)



21

## Hypothermia in Surgical Patients

- Kurz, et al NEJM 1996
- Colorectal Surgery
  - 104 normothermia (IV fluids, forced air warmer), mean temp 36.6°C
  - 96 contols, mean temp 34.7°C



22

## Oxygenation and SSI

### Effects of oxygen on post-surgical infections during an individualised perioperative open-lung ventilatory strategy: a randomised controlled trial

Carlos Ferrando<sup>1,2,\*</sup>, César Aldecoa<sup>3</sup>, Carmen Unzueta<sup>4</sup>, F. Javier Belda<sup>5</sup>, Julián Libroero<sup>6</sup>,

Br J Anaesth.  
124: (2020)

- Abdominal surgery, N=717. 0.8 vs 0.3 FiO2 during procedure and 3 hrs postop. RR of SSI 0.94 (0.59-1.5) P=0.9

### Supplemental Oxygen and Surgical Site Infection in Colorectal Surgery: A Systematic Review and Meta-analysis

Scott K Shaffer<sup>1</sup>, Tito D Tubog<sup>2</sup>, Terri D Kane<sup>3</sup>, Nathan E Stortroen<sup>4</sup>

AANA. 89: (2021)

- No significant effect of supplemental O2 (RR 0.91; 0.74-1.13)

23

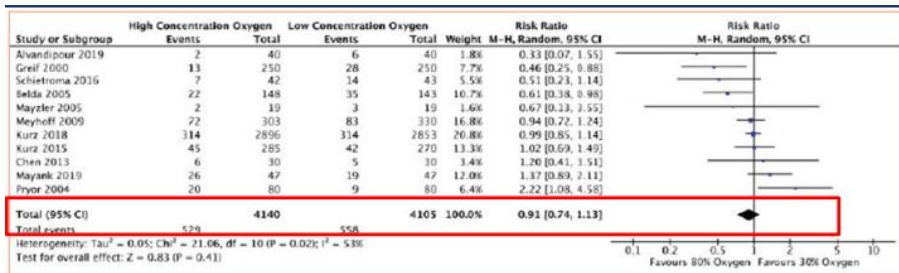


Figure 2. Forest Plot of the Incidence of Surgical Site Infection Comparing High Concentration (80% inspired) Versus Low Concentration (30-35% inspired) Oxygen for Colorectal Surgery  
Abbreviations: CI, confidence interval; M-H, Mantel-Haenszel; Random, random-effects model

Shaffer et al. AANA. 89: (2021)

- Compendium change from “Basic/Essential Practice” to “Unresolved Issue”

24

## Nosocomial Pneumonia/VAP

- Most common HAI? 1:100 hospitalized pts; 1:10 on mechanical ventilation
- 275,000 cases per year?
- Mortality 10%
- Cost: LOS 7 days, 1.1 billion dollars/yr



SHEA/IDSA/APIC Practice Recommendation. Strategies to prevent ventilator-associated pneumonia, ventilator-associated events, and nonventilator hospital-acquired pneumonia in acute-care hospitals: 2022 Update. *Infection Control & Hospital Epidemiology* (2022), 43, 687–713. doi:10.1017/ice.2022.88

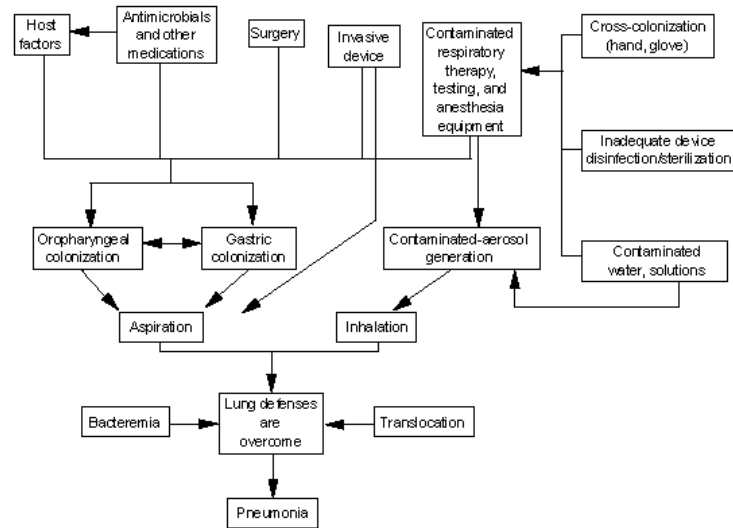
25

## Nosocomial Pneumonia: Risk Factors

- **Mechanical ventilation**
- Head trauma
- Abdominal/thoracic surg
- NG tube
- Sedation/analgesics
- Self-extubation
- Chronic lung disease
- Severity of illness
- Age
- Supine head position
- Bronchoscopy
- GI bleeding
- Shock
- Vent circuit changes < 48h
- Prior antibiotics

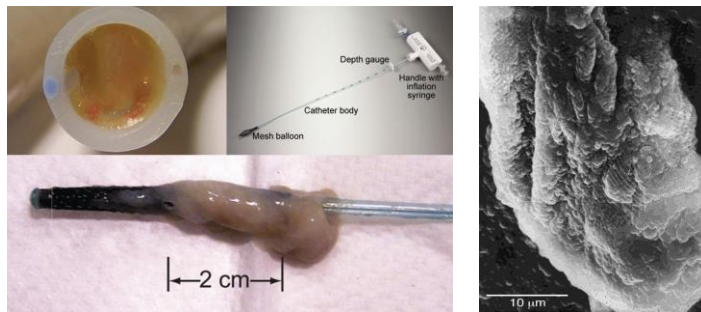
26

## Pathogenesis of HAP



27

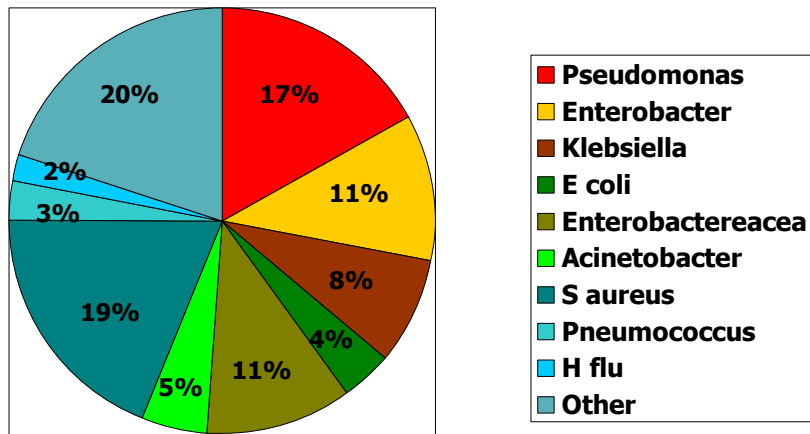
## VAP: Pathogenesis



- Endotracheal intubation increases risk of nosocomial pneumonia 10-20 fold
- Eliminates gag/cough protective mechanisms
- Leakage of secretions around ET cuff is thought to be major route of inoculation of pathogens

28

## Nosocomial Pneumonia: Microbial Etiology



29

## Prevention “The VAP Bundle”

- Avoid intubation and prevent reintubation
  - Use high-flow nasal oxygen or noninvasive positive pressure ventilation (NIPPV) whenever safe and feasible (HIGH)
  - Minimize sedation (MODERATE)
    - Avoid benzodiazepines in favor of other agents
    - Use a protocol to minimize sedation
    - Implement a ventilator liberation protocol
  - Maintain and improve physical conditioning (MODERATE)
  - Elevate the head of the bed to 30–45° (LOW)
  - Provide oral care with toothbrushing but without chlorhexidine (MODERATE)
  - Provide early enteral vs. parenteral nutrition (HIGH)
  - Change the ventilator circuit only if visibly soiled or malfunctioning (HIGH)
- Additional approaches
  - Use selective oral or digestive decontamination in countries and ICUs with low prevalence of antibiotic-resistant organisms
  - Utilize endotracheal tubes with subglottic secretion drainage ports for patients expected to require >48–72 hours of mechanical ventilation
  - Consider early tracheostomy
  - Consider postpyloric rather than gastric feeding for patients with gastric intolerance or at high risk for aspiration

30

## Not Recommended

no impact or negative impact on duration of mechanical ventilation, length of stay, or mortality.

- Oral care with chlorhexidine
- Probiotics
- Ultrathin polyurethane endotracheal tube cuffs
- Tapered endotracheal tube cuffs
- Automated control of endotracheal tube cuff pressure
- Frequent cuff-pressure monitoring
- Silver-coated endotracheal tubes
- Kinetic beds
- Prone positioning
- Chlorhexidine bathing
- Stress-ulcer prophylaxis
- Monitoring residual gastric volumes
- Early parenteral nutrition

31

## CLABSI: Scope of the Problem

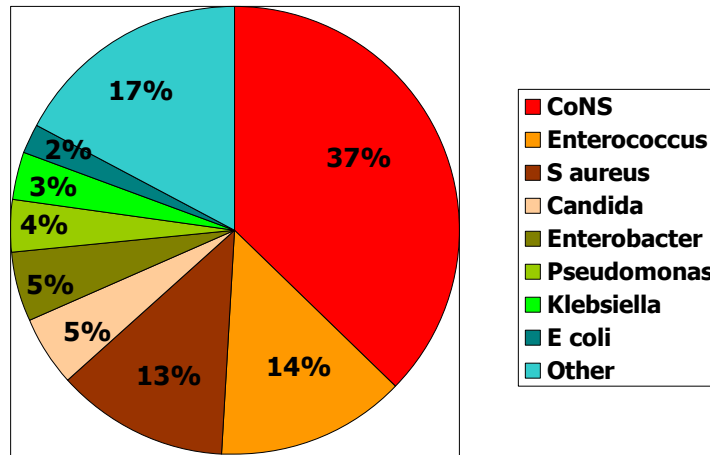


- Approximately 78,000 patients experience catheter-related BSI in the United States hospitals and dialysis units yearly
- LOS: ~7 days, Cost \$32,000 per case

SHEA/IDSA/APIC Practice Recommendation Strategies to prevent central line-associated bloodstream infections in acute-care hospitals: 2022 Update. *Infection Control & Hospital Epidemiology* (2022), 43, 553–569. doi:10.1017/ice.2022.8

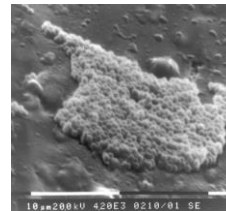
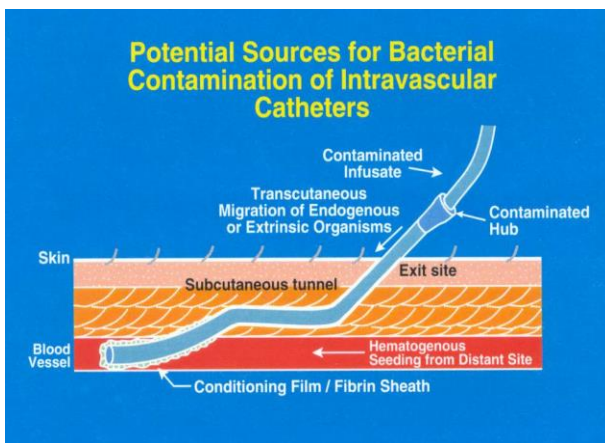
32

## Nosocomial Bacteremia – USA CDC NHSN



33

## Pathogenesis of CLABSI



34

## Prevention of CLABSI: “The Bundle Approach”

### Before insertion

- Provide easy access to an evidence-based list of indications for CVC use to minimize unnecessary CVCs
- Require education and competency assessment of HCP involved in insertion and maintenance of CVCs
- Bathe ICU patients aged >2 months with a chlorhexidine preparation daily

### At insertion

- Have a process in place, such as a checklist, to ensure adherence to infection prevention practices
- Perform hand hygiene prior to catheter insertion or manipulation
- The subclavian site is preferred to reduce infectious complications
- Use an all-inclusive catheter cart or kit
- Use ultrasound guidance for catheter insertion
- Use maximum sterile barrier precautions during CVC insertion
- Use an alcoholic chlorhexidine antiseptic for skin preparation

### After insertion

- Ensure appropriate nurse-to-patient ratio and limit use of float nurses in ICUs
- Use chlorhexidine-containing dressings for CVCs in patients over 2 months of age
- Change transparent dressings and perform site care with a chlorhexidine-based antiseptic at least every 7 days or immediately if the dressing is soiled, loose, or damp. Change gauze dressings every 2 days
- Disinfect catheter hubs, needleless connectors, and injection ports before accessing the catheter
- Remove nonessential catheters
- Routine replacement of administration sets not used for blood, blood products, or lipid formulations can be performed at intervals up to 7 days
- Perform surveillance for CLABSI in ICU and non-ICU settings

35

## Prevention of CLABSI

### Additional Approaches

- Use antiseptic- or antimicrobial-impregnated CVCs
- Use antimicrobial lock therapy for long-term CVCs
- Use recombinant tissue plasminogen activating factor (rt-PA) once weekly after hemodialysis in patients undergoing hemodialysis through a CVC
- Utilize infusion or vascular access teams for reducing CLABSI rates
- Use antimicrobial ointments for hemodialysis catheter insertion sites
- Use an antiseptic-containing hub/connector cap/port protector to cover connectors

### Avoid

- Do not use antimicrobial prophylaxis for short-term or tunneled catheter insertion or while catheters are in situ
- Do not routinely replace CVCs or arterial catheters

### Unresolved Issues

- Routine use of needleless connectors as a CLABSI prevention strategy before an assessment of risks, benefits, and education regarding proper use
- Surveillance of other types of catheters (eg, peripheral arterial or peripheral venous catheters)
- Standard, nonantimicrobial transparent dressings and CLABSI risk.
- The impact of using chlorhexidine-based products on bacterial resistance to chlorhexidine
- Sutureless securement
- Impact of silver zeolite-impregnated umbilical catheters in preterm infants
- Necessity of mechanical disinfection of a catheter hub, needleless connector, and injection port before accessing the catheter when antiseptic-containing caps are being used

36



## Hospital Onset Bloodstream Infection: HOB

- Definition: A bacterial or fungal pathogen from a blood culture specimen collected on the 4th calendar day of admission or later
  - Easy to identify based on lab result – electronic surveillance
  - HOB correlates with CLABSI
  - HOB captures other vascular catheter associated BSI (PIV, midlines, arterial caths, etc), as well as non-vascular catheter causes (pneumonia, UTI, SSI, etc).
  - HOB metric would discourage “cost shifting” away from CLABSI
  - HOB may promote blood culture stewardship
- Proportion of HOB that are preventable is unknown (~2/3 in Dantes et al. ICHE 2019)
- HOB may result in “don’t culture, just treat” approach
- NMC: 2024 146 cases; CLABSI = 13%

39

## How to control MRSA/VRE/other MDROs?

### Horizontal vs Vertical Infection Prevention Interventions

- Intervention that affects narrow group of patients (eg. Active surveillance cultures for MRSA) vs intervention that cuts across lines and affects numerous patient groups (eg. Chlorhexidine bathing)



40

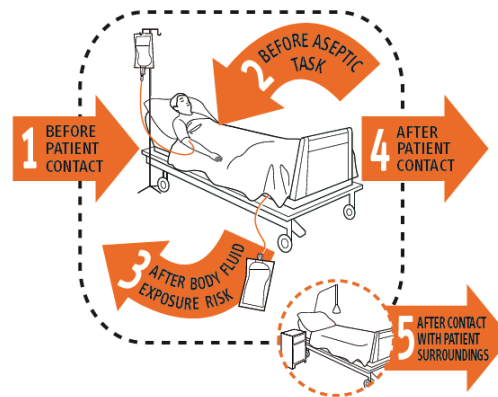
## Doing the most good for the most people in the most cost efficient manner possible

- Hand Hygiene & Standard Precautions
- Environmental Cleaning
- Chlorhexidine Bathing
- Eliminate Fomites
- Insert and care for devices correctly
- Respiratory etiquette and vaccination
- Presenteeism
- Antimicrobial stewardship

41

## Hand Hygiene

### Your 5 moments for HAND HYGIENE



42

## Hand Hygiene



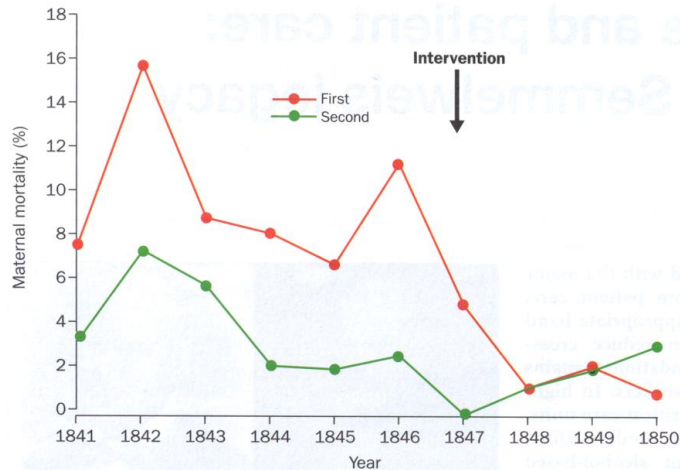
- Ignaz Philipp Semmelweis (1818-1865)
- “Etiology, Concept, and prophylaxis of Childbed Fever” 1861

43



44

## Impact of Hand Hygiene on Puerperal Fever – Semmelweis 1861



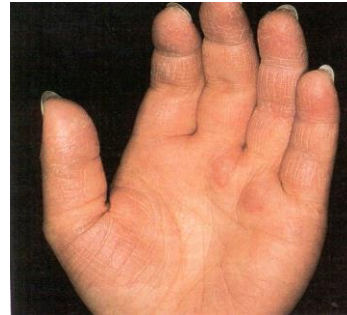
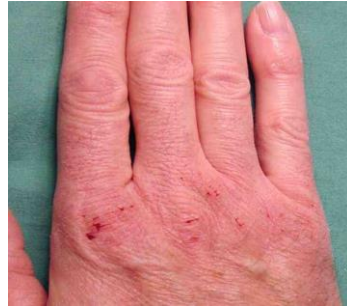
45

Because of my convictions, I must here confess that God only knows the number of patients that have gone prematurely to their graves by my fault. I have handled cadavers extensively, more than most doctors. As painful and depressing, indeed, as such an acknowledgement is, still the remedy does not lie in concealment and this misfortune should not persist forever, for the truth must be made known to all concerned.”

Ignaz Semmelweis

46

## Barriers to Hand Hygiene



47

## Barriers to Hand Hygiene

**Where is the sink?**



**Here it is!**

**Do you want to wash your hands here?**



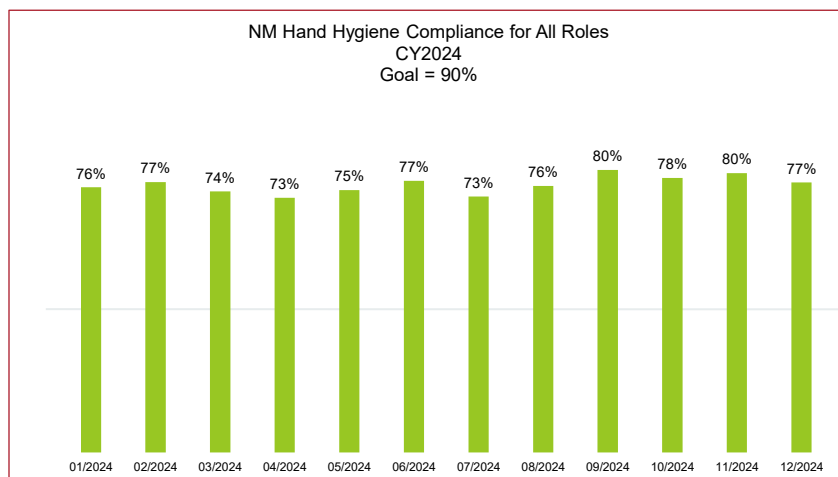
48

## Hand Hygiene at Nebraska Medicine



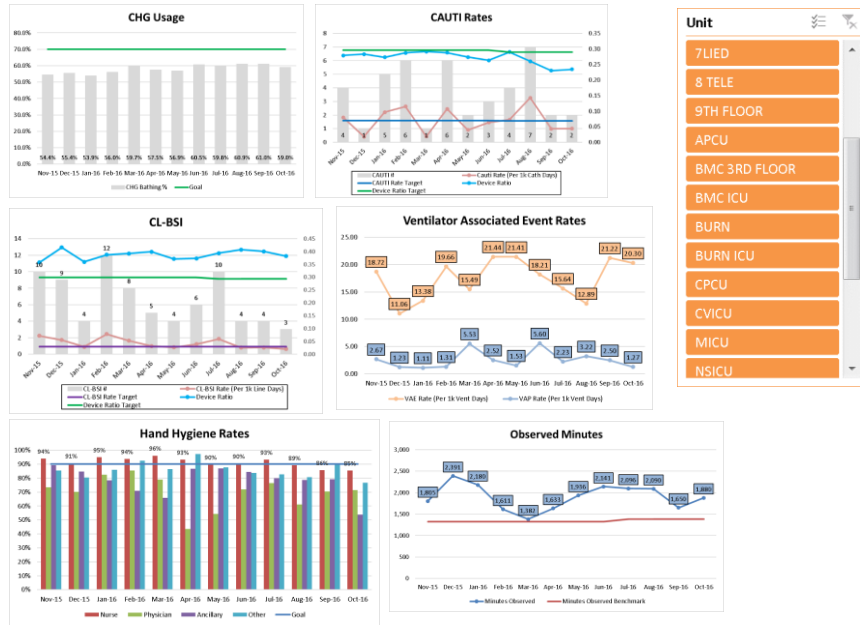
49

## HAND HYGIENE AT NMC



50

# Inpatient Unit Specific Dashboard



51

## Provide a Clean Environment



- Use of a UV marking solution to assess environmental cleaning

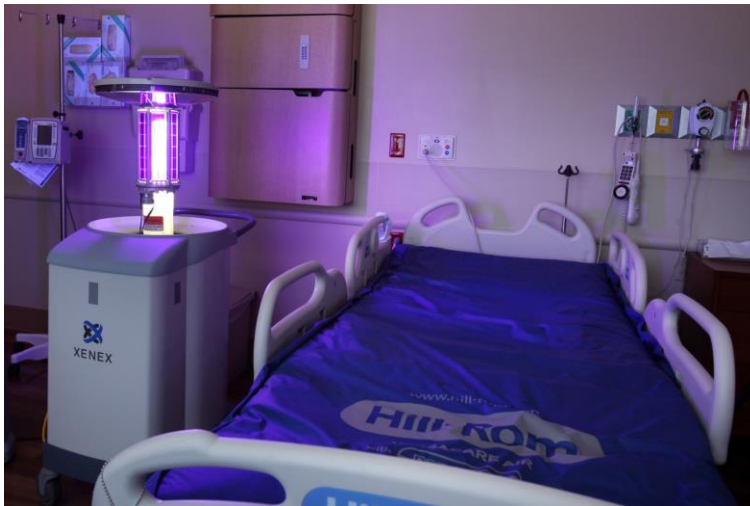
52

## High Touch Surfaces



53

## UV Disinfection



54

## Fomite Elimination



93% Contamination rate  
20% *S. aureus*  
13% Gram-negative bacilli

55

## Patient Dedicated Stethoscope



56

# Chlorhexidine Patient Bathing

Effectiveness of Chlorhexidine Bathing to Reduce Catheter-Associated Bloodstream Infections in Medical Intensive Care Unit Patients

Susan C. Blendale, MD; William E. Trick, MD; Ines M. Gonzalez, MD; Rosie D. Lytle, MD; Mary K. Hayden, MD; Robert A. Wintstein, MD

Arch Intern Med 2007 ICHE 2007

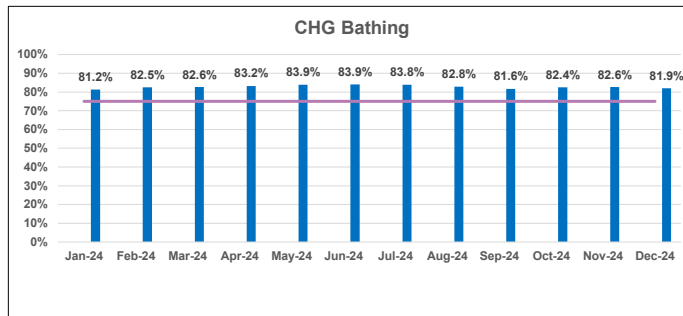
Selective Use of Intranasal Mupirocin and Chlorhexidine Bathing and the Incidence of Methicillin-Resistant *Staphylococcus aureus* Colonization and Infection Among Intensive Care Unit Patients

Glenn Edrington, MD; Russell Lampert, DSc; Jeff Federopis; Steve Kottkevary, PhD; Edward Wong, MD; Michael Climo, MD

Effect of Hospital-Wide Chlorhexidine Patient Bathing on Healthcare-Associated Infections

ICHE 2012

Mark E. Rupp, MD<sup>1,2</sup>; R. Jennifer Cavalleri, RN<sup>1</sup>; Elizabeth Lyden, MS<sup>1</sup>; Jennifer Kucera, MS<sup>1</sup>; MaryAnn Martin, RN<sup>2</sup>; Teresa Fitzgerald, RN<sup>2</sup>; Kate Tyner, RN<sup>2</sup>; James R. Anderson, PhD<sup>2</sup>; Trevor C. VanSchooneveld, MD<sup>1,2</sup>



57

# Two Sides of the Same Coin

Infection Prevention



Antimicrobial Stewardship

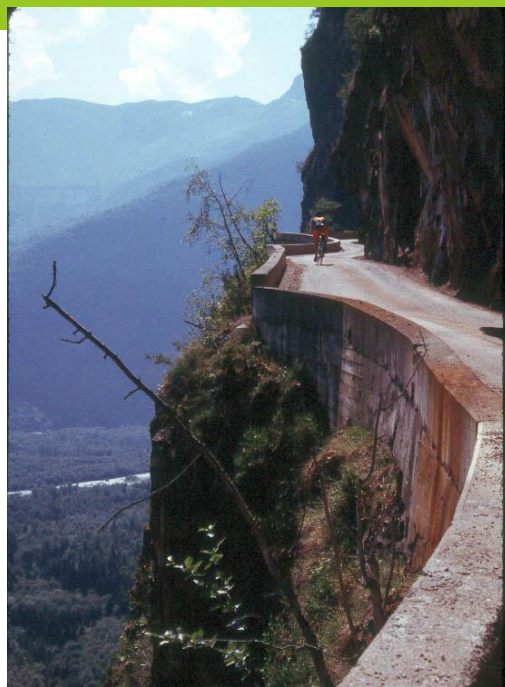
58

# Antimicrobial Stewardship Program

<http://www.nebraskamed.com/careers/education/asp/index.aspx>



59



## Taking the high road

Prevention of HAIs because it is the right thing to do.

60