

Evidence-Based Geriatric Nursing Protocols for Best Practice

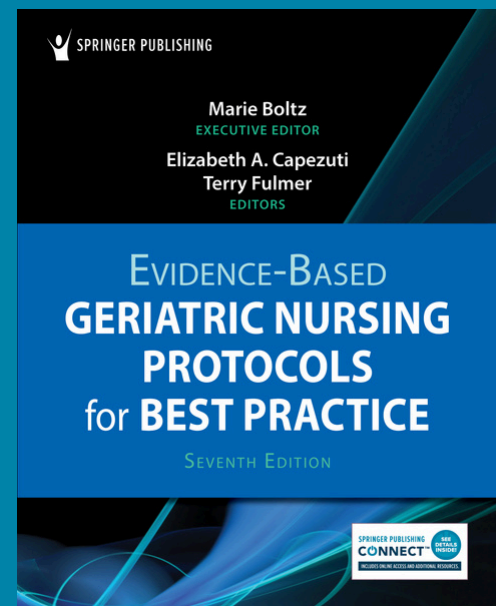
Seventh Edition

- Release Date: October 14, 2024
- Paperback / softback
- 750 Pages
- Trim Size: 8in x 10in
- ISBN: 9780826152763
- eBook ISBN: 9780826152770
- List Price: \$135.00

Key Features:

- Delivers easy-to-follow geriatric protocols for best practices
- Updates evidence regularly to reflect current practice standards
- Encompasses a broad scope of content including detailed information rarely covered in professional literature
- Offers case studies and discussions to illustrate application of protocol to practice
- Written by renowned leaders in geriatric nursing education and practice

Save 40% off the List Price at
www.springerpub.com
by using the discount code
NICHE40



Editors

Marie Boltz, PhD, RN, GNP-BC, FGSA, FAAN

Elizabeth Capezuti, PhD, RN, FAAN

Terry T. Fulmer, PhD, RN, FAAN

The result of a collaboration between expert practitioners and educators in geriatric nursing, the seventh edition of this acclaimed reference has been updated and revised with new information on chronic conditions and emerging models of care presented in 10 completely new chapters.

It provides the most current, evidence-based protocols for improving both quality of care and patient outcomes when caring for older adults in multiple disciplines and settings.

As in past editions, the seventh edition is distinguished by its use of a rigorous systematic method (AGREE: Appraisal of Guidelines for Research and Evaluation) to improve the validity of the book's evidence-based content.

New to the Seventh Edition:

- Updated to encompass the latest trends in older adult care, chronic conditions, and emerging models of care
- New chapters on care and management of diabetes and respiratory care
- New chapters on issues surrounding nutrition and dementia, and mental illness
- New chapter on care and comfort at the end of life
- New chapters on adopting principles of diversity, equity, and inclusion and an age-friendly health system into practice
- New chapters on models of care in long-term, community-based, and primary care guidelines